

DS-2CD2510F

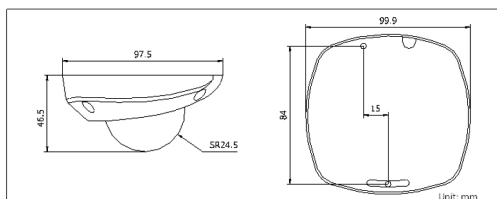
1.3MP Mini Dome Network Camera



Key features

- Up to 1.3 megapixel (1280 x 960) resolution
- HD real-time video
- DWDR & BLC
- 3D DNR
- Support on-board storage (up to 64GB)
- IP66
- Vandal-proof

Dimensions



Accessories



DS-1271ZJ-120
Pendant mount



DS-1272ZJ-120
Wall mount



DS-1272ZJ-120B
Wall mount with junction box

Available models

DS-2CD2510F

DS-2CD2510F	
Camera	
Image sensor	1/3" progressive scan CMOS
Min. illumination	Color: 0.01 lux@F1.2, AGC on B/W: 0.001 lux@F1.2, AGC on
Shutter time	1/25s (1/30s) ~ 1/100,000s
Lens	4mm@F2.0, angle of view: 68° (4mm) (2.8mm, 6mm optional)
Lens mount	M12
Day & night	Electronic
Adjustment angle	Pan: ±15°, tilt: 0~90°, rotation: ±15°
Digital noise reduction	3D DNR
Wide dynamic range	Digital WDR
Backlight compensation	Yes, zone configurable
Compression Standard	
Video compression	H.264 / MJPEG
H.264 codec profile	Main profile
Bit rate	32 Kbps ~ 16 Mbps
Image	
Max. Image Resolution	1280 × 960
Frame rate	50Hz: 25fps (1280 × 960), 25fps (1280 × 720), 25fps (704 × 576), 25fps (640 × 480) 60Hz: 30fps (1280 × 960), 30fps (1280 × 720), 30fps (704 × 576), 30fps (640 × 480)
Image settings	Saturation, brightness, contrast, sharpness adjustable through client software or web browser
Network	
Network storage	NAS
Alarm trigger	Motion detection, tampering alarm, network disconnect, IP address conflict, storage exception, storage error
Protocols	TCP/IP, ICMP, HTTP, HTTPS, FTP, DHCP, DNS, DDNS, RTP, RTSP, RTCP, PPPoE, NTP, UPnP, SMTP, SNMP, IGMP, 802.1X, QoS, IPv6, Bonjour
System compatibility	ONVIF, PSIA, CGI
General functionalities	Flickerless, dual stream, heartbeat, mirror, user authentication, video mask, watermark
Interface	
Communication interface	1 RJ45 10M / 100M ethernet port
On-board storage	Built-in Micro SD/SDHC/SDXC card slot, up to 64 GB
General	
Operating conditions	-30 °C ~ 60 °C (-22°F ~ 140 °F) humidity 95% or less (non-condensing)
Power supply	DC12V ± 10%, PoE (802.3af)
Power consumption	Max. 4W
Ingress protection level	IP66
Impact protection	IEC60068-2-75Eh, 50J; EN50102, up to IK10
Dimensions (mm)	99.9 x 97.5 x 46.5
Weight	250g